

Belcamp SHD

Verified Photomontages & Computer-generated imagery (CGIs)



NOTES AND METHODOLOGY

PROJECT DETAILS

Title: Belcamp SHD

Design team: Gerard Gannon Properties
CCK Architects
Wilson Architecture
TBS Studio
RMDA Landscape Architecture
Downey Planning

Prepared by Digital Dimensions

Issue Date	02/05/22	03/05/22				
Revision	A	B				
Status	FOR APPROVAL	FOR PRINT				

PROFILE

Digital Dimensions are specialists in computer generated visualisations for all forms of planning applications. The company was established in 2000 by John Healy and Jim Manning in Dublin, Ireland. Digital Dimensions is one of Ireland's leading architectural visualisation companies with 20+ years of experience covering a wide range of solutions in the areas of architectural visualisation, environmental design and digital media.

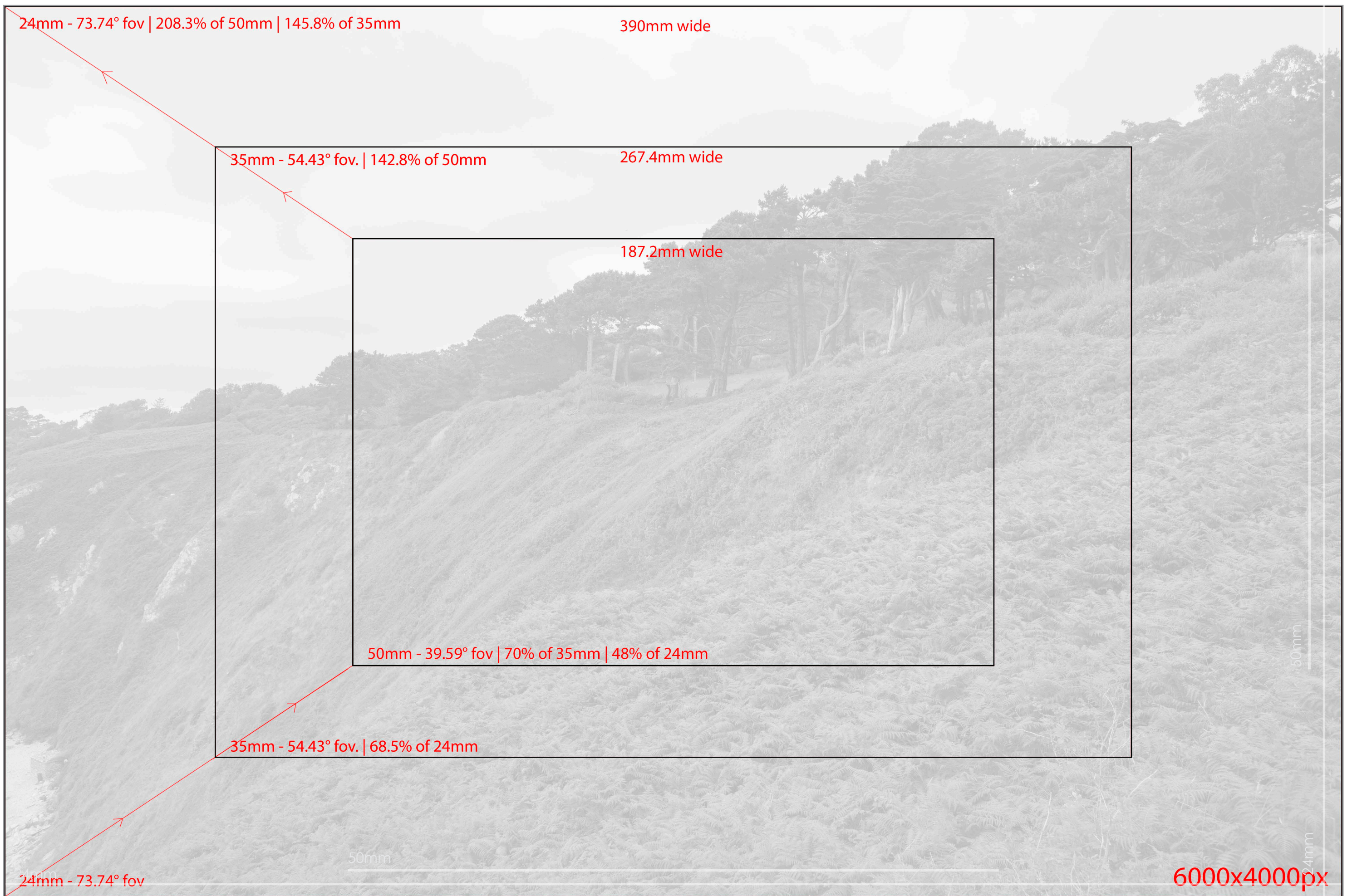
Method Statement - Photo-montage production using guidance in The Landscape Institute TGN-06-19 Visual Representation of Development Proposals.

1. Photographs are taken from locations as advised by the planning consultant with a full frame SLR digital camera and prime lens. Photographs are taken using the most appropriate combination of lens focal lengths to ensure that the field of view covers the proposed scheme environment or landscape context. The photographs are taken horizontally with a survey level attached to the camera. The photographic positions are marked (for later surveying), the height of the camera and the focal length of the image recorded.
2. In each photograph, a minimum of 3no. visible fixed points are marked for surveying. These are control points for model alignment within the photograph. All surveying is carried out by a qualified topographical surveyor using Total Station / GPS devices.
3. The photographic positions and the control points are geographically surveyed and this survey is tied in to the site topographical survey supplied by the Architect / client.
4. The buildings are accurately modelled in 3D cad software from cad drawings or BIM model supplied by the Architect. Material finishes are applied to the 3D model and scene element are place like trees and planting to represent the proposed landscaping.
5. Virtual 3D cameras are positioned according to the survey co-ordinates and the focal length is set to match the photograph. Pitch and rotation are adjusted using the survey control points to align the virtual camera to the photograph. Lighting is set to match the time of day the photograph is taken.
6. The proposed development is output from the 3D software using this camera and the image is then blended with the original photograph to give an accurate image of what the proposed development will look like in its proposed setting.
7. In the event of the development not being visible, the roof line of the development will be outlined in red if re-requested.
8. The document contains:
 - a. Site location map with view locations plotted.
 - b. Photomontage sheets with existing and proposed conditions.
 - c. Reference information including field of view/focal length, range to site / development, date of photograph.
9. For the views, we provide two images:
 - a. The existing view on various dates in October 2022);
 - b. The proposed photomontage (or scheme outline as appropriate)



View Location Map - not to scale

This map is for view location purposes only. Please refer to Architects drawings for site layout and redline boundary.



< 24mm / 73.7° | < 35mm / 54.4° | < 50mm / 39.6° | Lens Information: Focal Length / Field of View | 50mm / 39.6° > | 35mm / 54.4° > | 24mm / 73.7° >

Location	Description	Photography Date	Field of view	35mm equivalent	Distance to site boundary	Camera model
						Canon EOS 5DS





< 24mm / 73.7° | < 35mm / 54.4° | < 50mm / 39.6° | Lens Information: Focal Length / Field of View | 50mm / 39.6° > | 35mm / 54.4° > | 24mm / 73.7° > |

Location	Description	Photography Date	Field of view	35mm equivalent	Distance to site boundary	Camera model
View 1 Existing	Looking South from end of Carr's Lane	30/10/21	73.7°	24mm	11.2m	Canon EOS 5DS



< 24mm / 73.7° < 35mm / 54.4° < 50mm / 39.6° Lens Information: Focal Length / Field of View 50mm / 39.6° > 35mm / 54.4° > 24mm / 73.7° >

Location	Description	Photography Date	Field of view	35mm equivalent	Distance to site boundary	Camera model
View 1 Proposed	Looking South from end of Carr's Lane	30/10/21	73.7°	24mm	11.2m	Canon EOS 5DS



< 24mm / 73.7° < 35mm / 54.4° < 50mm / 39.6° Lens Information: Focal Length / Field of View 50mm / 39.6° > 35mm / 54.4° > 24mm / 73.7° >

Location	Description	Photography Date	Field of view	35mm equivalent	Distance to site boundary	Camera model
View 2 Existing	Looking South from outside No 8, Limekiln Lane	30/10/21	73.7°	24mm	387m	Canon EOS 5DS

Our Ref: 22-010 Belcamp SHD_print



< 24mm / 73.7° < 35mm / 54.4° < 50mm / 39.6° Lens Information: Focal Length / Field of View 50mm / 39.6° > 35mm / 54.4° > 24mm / 73.7° >

Location	Description	Photography Date	Field of view	35mm equivalent	Distance to site boundary	Camera model
View 2 Proposed	Looking South from outside No 8, Limekiln Lane	30/10/21	73.7°	24mm	387m	Canon EOS 5DS



< 24mm / 73.7° | < 35mm / 54.4° | < 50mm / 39.6° | Lens Information: Focal Length / Field of View | 50mm / 39.6° > | 35mm / 54.4° > | 24mm / 73.7° >

Location	Description	Photography Date	Field of view	35mm equivalent	Distance to site boundary	Camera model
View 3 Existing	Looking South from Baskin Cottages	30/10/21	73.7°	24mm	1169m	Canon EOS 5DS



< 24mm / 73.7° | < 35mm / 54.4° | < 50mm / 39.6° | Lens Information: Focal Length / Field of View | 50mm / 39.6° > | 35mm / 54.4° > | 24mm / 73.7° >

Location	Description	Photography Date	Field of view	35mm equivalent	Distance to site boundary	Camera model
View 3 Proposed	Looking South from Baskin Cottages	30/10/21	73.7°	24mm	1169m	Canon EOS 5DS



< 24mm / 73.7° < 35mm / 54.4° < 50mm / 39.6° Lens Information: Focal Length / Field of View 50mm / 39.6° > 35mm / 54.4° > 24mm / 73.7° >

Location	Description	Photography Date	Field of view	35mm equivalent	Distance to site boundary	Camera model
View 4 Existing	Looking East from Clonshaugh Road	30/10/21	73.7°	24mm	1057m	Canon EOS 5DS



< 24mm / 73.7° | < 35mm / 54.4° | < 50mm / 39.6° | Lens Information: Focal Length / Field of View | 50mm / 39.6° > | 35mm / 54.4° > | 24mm / 73.7° >

Location	Description	Photography Date	Field of view	35mm equivalent	Distance to site boundary	Camera model
View 4 Proposed	Looking East from Clonshaugh Road	30/10/21	73.7°	24mm	1057m	Canon EOS 5DS





< 24mm / 73.7° < 35mm / 54.4° < 50mm / 39.6° Lens Information: Focal Length / Field of View 50mm / 39.6° > 35mm / 54.4° > 24mm / 73.7° >

Location	Description	Photography Date	Field of view	35mm equivalent	Distance to site boundary	Camera model
View 5 Existing	Looking East from Clonshaugh Road	30/10/21	73.7°	24mm	920m	Canon EOS 5DS





< 24mm / 73.7° < 35mm / 54.4° < 50mm / 39.6° Lens Information: Focal Length / Field of View 50mm / 39.6° > 35mm / 54.4° > 24mm / 73.7° >

Location	Description	Photography Date	Field of view	35mm equivalent	Distance to site boundary	Camera model
View 5 Proposed	Looking East from Clonshaugh Road	30/10/21	73.7°	24mm	920m	Canon EOS 5DS



< 24mm / 73.7° < 35mm / 54.4° < 50mm / 39.6° Lens Information: Focal Length / Field of View 50mm / 39.6° > 35mm / 54.4° > 24mm / 73.7° >

Location	Description	Photography Date	Field of view	35mm equivalent	Distance to site boundary	Camera model
View 6 Existing	Looking East from Clonshaugh Road	30/10/21	73.7°	24mm	909m	Canon EOS 5DS



< 24mm / 73.7° < 35mm / 54.4° < 50mm / 39.6° Lens Information: Focal Length / Field of View 50mm / 39.6° > 35mm / 54.4° > 24mm / 73.7° >

Location	Description	Photography Date	Field of view	35mm equivalent	Distance to site boundary	Camera model
View 6 Proposed	Looking East from Clonshaugh Road	30/10/21	73.7°	24mm	909m	Canon EOS 5DS



< 24mm / 73.7° < 35mm / 54.4° < 50mm / 39.6° Lens Information: Focal Length / Field of View 50mm / 39.6° > 35mm / 54.4° > 24mm / 73.7° >

Location	Description	Photography Date	Field of view	35mm equivalent	Distance to site boundary	Camera model
View 7 Existing	Looking East from Clonshaugh Road	30/10/21	73.7°	24mm	914m	Canon EOS 5DS



< 24mm / 73.7° < 35mm / 54.4° < 50mm / 39.6° Lens Information: Focal Length / Field of View 50mm / 39.6° > 35mm / 54.4° > 24mm / 73.7° >

Location	Description	Photography Date	Field of view	35mm equivalent	Distance to site boundary	Camera model
View 7 Proposed	Looking East from Clonshaugh Road	30/10/21	73.7°	24mm	914m	Canon EOS 5DS





< 24mm / 73.7° < 35mm / 54.4° < 50mm / 39.6° Lens Information: Focal Length / Field of View 50mm / 39.6° > 35mm / 54.4° > 24mm / 73.7° >

Location	Description	Photography Date	Field of view	35mm equivalent	Distance to site boundary	Camera model
View 8 Existing	Looking East from Clayton Hotel access road	30/10/21	73.7°	24mm	1112m	Canon EOS 5DS





< 24mm / 73.7° < 35mm / 54.4° < 50mm / 39.6° Lens Information: Focal Length / Field of View 50mm / 39.6° > 35mm / 54.4° > 24mm / 73.7° >

Location	Description	Photography Date	Field of view	35mm equivalent	Distance to site boundary	Camera model
View 8 Proposed	Looking East from Clayton Hotel access road	30/10/21	73.7°	24mm	1112m	Canon EOS 5DS





< 24mm / 73.7° | < 35mm / 54.4° | < 50mm / 39.6° | Lens Information: Focal Length / Field of View | 50mm / 39.6° > | 35mm / 54.4° > | 24mm / 73.7° >

Location	Description	Photography Date	Field of view	35mm equivalent	Distance to site boundary	Camera model
View 9 Existing	Looking East from roundabout @ Clonsaugh Rd and R139	30/10/21	73.7°	24mm	1101m	Canon EOS 5DS



< 24mm / 73.7° < 35mm / 54.4° < 50mm / 39.6° Lens Information: Focal Length / Field of View 50mm / 39.6° > 35mm / 54.4° > 24mm / 73.7° >

Location	Description	Photography Date	Field of view	35mm equivalent	Distance to site boundary	Camera model
View 9 Proposed	Looking East from roundabout @ Clonsaugh Rd and R139	30/10/21	73.7°	24mm	1101m	Canon EOS 5DS



< 24mm / 73.7° < 35mm / 54.4° < 50mm / 39.6° Lens Information: Focal Length / Field of View 50mm / 39.6° > 35mm / 54.4° > 24mm / 73.7° >

Location	Description	Photography Date	Field of view	35mm equivalent	Distance to site boundary	Camera model
View 10 Existing	Looking East from playing field in Belcamp Park	30/10/21	73.7°	24mm	907m	Canon EOS 5DS



< 24mm / 73.7° < 35mm / 54.4° < 50mm / 39.6° Lens Information: Focal Length / Field of View 50mm / 39.6° > 35mm / 54.4° > 24mm / 73.7° >

Location	Description	Photography Date	Field of view	35mm equivalent	Distance to site boundary	Camera model
View 10 Proposed	Looking East from playing field in Belcamp Park	30/10/21	73.7°	24mm	907m	Canon EOS 5DS



< 24mm / 73.7° < 35mm / 54.4° < 50mm / 39.6° Lens Information: Focal Length / Field of View 50mm / 39.6° > 35mm / 54.4° > 24mm / 73.7° >

Location	Description	Photography Date	Field of view	35mm equivalent	Distance to site boundary	Camera model
View 11 Existing	Looking East from R139 at entrance to St Michaels House	30/10/21	73.7°	24mm	305.6m	Canon EOS 5DS



< 24mm / 73.7° | < 35mm / 54.4° | < 50mm / 39.6° | Lens Information: Focal Length / Field of View | 50mm / 39.6° > | 35mm / 54.4° > | 24mm / 73.7° >

Location	Description	Photography Date	Field of view	35mm equivalent	Distance to site boundary	Camera model
View 11 Proposed	Looking East from R139 at entrance to St Michaels House	30/10/21	73.7°	24mm	305.6m	Canon EOS 5DS



< 24mm / 73.7° | < 35mm / 54.4° | < 50mm / 39.6° | Lens Information: Focal Length / Field of View | 50mm / 39.6° > | 35mm / 54.4° > | 24mm / 73.7° > |

Location	Description	Photography Date	Field of view	35mm equivalent	Distance to site boundary	Camera model
View 12 Existing	Looking East from R139 at entrance to Cara Park	30/10/21	73.7°	24mm	305.6m	Canon EOS 5DS

Our Ref: 22-010 Belcamp SHD_print



< 24mm / 73.7° | < 35mm / 54.4° | < 50mm / 39.6° | Lens Information: Focal Length / Field of View | 50mm / 39.6° > | 35mm / 54.4° > | 24mm / 73.7° >

Location	Description	Photography Date	Field of view	35mm equivalent	Distance to site boundary	Camera model
View 12 Proposed	Looking East from R139 at entrance to Cara Park	30/10/21	73.7°	24mm	305.6m	Canon EOS 5DS

Our Ref: 22-010 Belcamp SHD_print



< 24mm / 73.7° | < 35mm / 54.4° | < 50mm / 39.6° | Lens Information: Focal Length / Field of View | 50mm / 39.6° > | 35mm / 54.4° > | 24mm / 73.7° >

Location	Description	Photography Date	Field of view	35mm equivalent	Distance to site boundary	Camera model
View 13 Existing	Looking North East from R139 at entrance to Northern Close	30/10/21	73.7°	24mm	149.5m	Canon EOS 5DS





< 24mm / 73.7° | < 35mm / 54.4° | < 50mm / 39.6° | Lens Information: Focal Length / Field of View | 50mm / 39.6° > | 35mm / 54.4° > | 24mm / 73.7° >

Location	Description	Photography Date	Field of view	35mm equivalent	Distance to site boundary	Camera model
View 13 Proposed	Looking North East from R139 at entrance to Northern Close	30/10/21	73.7°	24mm	149.5m	Canon EOS 5DS



< 24mm / 73.7° | < 35mm / 54.4° | < 50mm / 39.6° | Lens Information: Focal Length / Field of View | 50mm / 39.6° > | 35mm / 54.4° > | 24mm / 73.7° >

Location	Description	Photography Date	Field of view	35mm equivalent	Distance to site boundary	Camera model
View 14 Existing	Looking North from Darndale Park	30/10/21	73.7°	24mm	142.5m	Canon EOS 5DS



< 24mm / 73.7° < 35mm / 54.4° < 50mm / 39.6° Lens Information: Focal Length / Field of View 50mm / 39.6° > 35mm / 54.4° > 24mm / 73.7° >

Location	Description	Photography Date	Field of view	35mm equivalent	Distance to site boundary	Camera model
View 14 Proposed	Looking North from Darndale Park	30/10/21	73.7°	24mm	142.5m	Canon EOS 5DS



< 24mm / 73.7° < 35mm / 54.4° < 50mm / 39.6° Lens Information: Focal Length / Field of View 50mm / 39.6° > 35mm / 54.4° > 24mm / 73.7° >

Location	Description	Photography Date	Field of view	35mm equivalent	Distance to site boundary	Camera model
View 15 Existing	Looking North from Darndale Park at playground	30/10/21	73.7°	24mm	214m	Canon EOS 5DS



< 24mm / 73.7° | < 35mm / 54.4° | < 50mm / 39.6° | Lens Information: Focal Length / Field of View | 50mm / 39.6° > | 35mm / 54.4° > | 24mm / 73.7° >

Location	Description	Photography Date	Field of view	35mm equivalent	Distance to site boundary	Camera model
View 15 Proposed	Looking North from Darndale Park at playground	30/10/21	73.7°	24mm	214m	Canon EOS 5DS



< 24mm / 73.7° < 35mm / 54.4° < 50mm / 39.6° Lens Information: Focal Length / Field of View 50mm / 39.6° > 35mm / 54.4° > 24mm / 73.7° >

Location	Description	Photography Date	Field of view	35mm equivalent	Distance to site boundary	Camera model
View 16 Existing	Looking North from R139	30/10/21	73.7°	24mm	32.3m	Canon EOS 5DS



< 24mm / 73.7° < 35mm / 54.4° < 50mm / 39.6° Lens Information: Focal Length / Field of View 50mm / 39.6° > 35mm / 54.4° > 24mm / 73.7° >

Location	Description	Photography Date	Field of view	35mm equivalent	Distance to site boundary	Camera model
View 16 Proposed	Looking North from R139	30/10/21	73.7°	24mm	32.3m	Canon EOS 5DS





< 24mm / 73.7° | < 35mm / 54.4° | < 50mm / 39.6° | Lens Information: Focal Length / Field of View | 50mm / 39.6° > | 35mm / 54.4° > | 24mm / 73.7° >

Location	Description	Photography Date	Field of view	35mm equivalent	Distance to site boundary	Camera model
View 17 Existing	Looking North West from R139	30/10/21	73.7°	24mm	203m	Canon EOS 5DS



< 24mm / 73.7° | < 35mm / 54.4° | < 50mm / 39.6° | Lens Information: Focal Length / Field of View | 50mm / 39.6° > | 35mm / 54.4° > | 24mm / 73.7° >

Location	Description	Photography Date	Field of view	35mm equivalent	Distance to site boundary	Camera model
View 17 Proposed	Looking North West from R139	30/10/21	73.7°	24mm	203m	Canon EOS 5DS



< 24mm / 73.7° < 35mm / 54.4° < 50mm / 39.6° Lens Information: Focal Length / Field of View 50mm / 39.6° > 35mm / 54.4° > 24mm / 73.7° >

Location	Description	Photography Date	Field of view	35mm equivalent	Distance to site boundary	Camera model
View 18 Existing	Looking West from Mayne River Ave at Bewleys entrance road	30/10/21	73.7°	24mm	206m	Canon EOS 5DS



< 24mm / 73.7° < 35mm / 54.4° < 50mm / 39.6° Lens Information: Focal Length / Field of View 50mm / 39.6° > 35mm / 54.4° > 24mm / 73.7° >

Location	Description	Photography Date	Field of view	35mm equivalent	Distance to site boundary	Camera model
View 18 Proposed	Looking West from Mayne River Ave at Bewleys entrance road	30/10/21	73.7°	24mm	206m	Canon EOS 5DS

Our Ref: 22-010 Belcamp SHD_print



< 24mm / 73.7° < 35mm / 54.4° < 50mm / 39.6° Lens Information: Focal Length / Field of View 50mm / 39.6° > 35mm / 54.4° > 24mm / 73.7° >

Location	Description	Photography Date	Field of view	35mm equivalent	Distance to site boundary	Camera model
View 19 Existing	Looking North West from roundabout at Malahide Rd & Priorswood Rd	30/10/21	73.7°	24mm	813m	Canon EOS 5DS

Our Ref: 22-010 Belcamp SHD_print



< 24mm / 73.7° < 35mm / 54.4° < 50mm / 39.6° Lens Information: Focal Length / Field of View 50mm / 39.6° > 35mm / 54.4° > 24mm / 73.7° >

Location	Description	Photography Date	Field of view	35mm equivalent	Distance to site boundary	Camera model
View 19 Proposed	Looking North West from roundabout at Malahide Rd & Priorswood Rd	30/10/21	73.7°	24mm	813m	Canon EOS 5DS





< 24mm / 73.7° < 35mm / 54.4° < 50mm / 39.6° Lens Information: Focal Length / Field of View 50mm / 39.6° > 35mm / 54.4° > 24mm / 73.7° >

Location	Description	Photography Date	Field of view	35mm equivalent	Distance to site boundary	Camera model
View 20 Existing	Looking North West from near junction of Malahide Rd & Belcamp Lane	30/10/21	73.7°	24mm	524m	Canon EOS 5DS

Our Ref: 22-010 Belcamp SHD_print



< 24mm / 73.7° < 35mm / 54.4° < 50mm / 39.6° Lens Information: Focal Length / Field of View 50mm / 39.6° > 35mm / 54.4° > 24mm / 73.7° >

Location	Description	Photography Date	Field of view	35mm equivalent	Distance to site boundary	Camera model
View 20 Proposed	Looking North West from near junction of Malahide Rd & Belcamp Lane	30/10/21	73.7°	24mm	524m	Canon EOS 5DS

Our Ref: 22-010 Belcamp SHD_print



< 24mm / 73.7° < 35mm / 54.4° < 50mm / 39.6° Lens Information: Focal Length / Field of View 50mm / 39.6° > 35mm / 54.4° > 24mm / 73.7° >

Location	Description	Photography Date	Field of view	35mm equivalent	Distance to site boundary	Camera model
View 21 Existing	Looking West from junction of Malahide Rd & R139	30/10/21	73.7°	24mm	489m	Canon EOS 5DS



< 24mm / 73.7° < 35mm / 54.4° < 50mm / 39.6° Lens Information: Focal Length / Field of View 50mm / 39.6° > 35mm / 54.4° > 24mm / 73.7° >

Location	Description	Photography Date	Field of view	35mm equivalent	Distance to site boundary	Camera model
View 21 Proposed	Looking West from junction of Malahide Rd & R139	30/10/21	73.7°	24mm	489m	Canon EOS 5DS



< 24mm / 73.7° | < 35mm / 54.4° | < 50mm / 39.6° | Lens Information: Focal Length / Field of View | 50mm / 39.6° > | 35mm / 54.4° > | 24mm / 73.7° >

Location	Description	Photography Date	Field of view	35mm equivalent	Distance to site boundary	Camera model
View 22 Existing	Looking West from junction of Malahide Rd & College ave	30/10/21	73.7°	24mm	31m	Canon EOS 5DS

Our Ref: 22-010 Belcamp SHD_print



< 24mm / 73.7° | < 35mm / 54.4° | < 50mm / 39.6° | Lens Information: Focal Length / Field of View | 50mm / 39.6° > | 35mm / 54.4° > | 24mm / 73.7° >

Location	Description	Photography Date	Field of view	35mm equivalent	Distance to site boundary	Camera model
View 22 Proposed	Looking West from junction of Malahide Rd & College ave	30/10/21	73.7°	24mm	31m	Canon EOS 5DS



< 24mm / 73.7° < 35mm / 54.4° < 50mm / 39.6° Lens Information: Focal Length / Field of View 50mm / 39.6° > 35mm / 54.4° > 24mm / 73.7° >

Location	Description	Photography Date	Field of view	35mm equivalent	Distance to site boundary	Camera model
View 23 Existing	Looking West from junction of Malahide Rd & College ave	30/10/21	73.7°	24mm	175m	Canon EOS 5DS



< 24mm / 73.7° < 35mm / 54.4° < 50mm / 39.6° Lens Information: Focal Length / Field of View 50mm / 39.6° > 35mm / 54.4° > 24mm / 73.7° >

Location	Description	Photography Date	Field of view	35mm equivalent	Distance to site boundary	Camera model
View 23 Proposed	Looking West from junction of Malahide Rd & College ave	30/10/21	73.7°	24mm	175m	Canon EOS 5DS

Our Ref: 22-010 Belcamp SHD_print



Blue line indicates outline of proposed development under seperate application number: F21A/0401

< 24mm / 73.7° < 35mm / 54.4° < 50mm / 39.6° Lens Information: Focal Length / Field of View 50mm / 39.6° > 35mm / 54.4° > 24mm / 73.7° >

Location	Description	Photography Date	Field of view	35mm equivalent	Distance to site boundary	Camera model
View 23 Proposed	Looking West from junction of Malahide Rd & College ave	30/10/21	73.7°	24mm	175m	Canon EOS 5DS





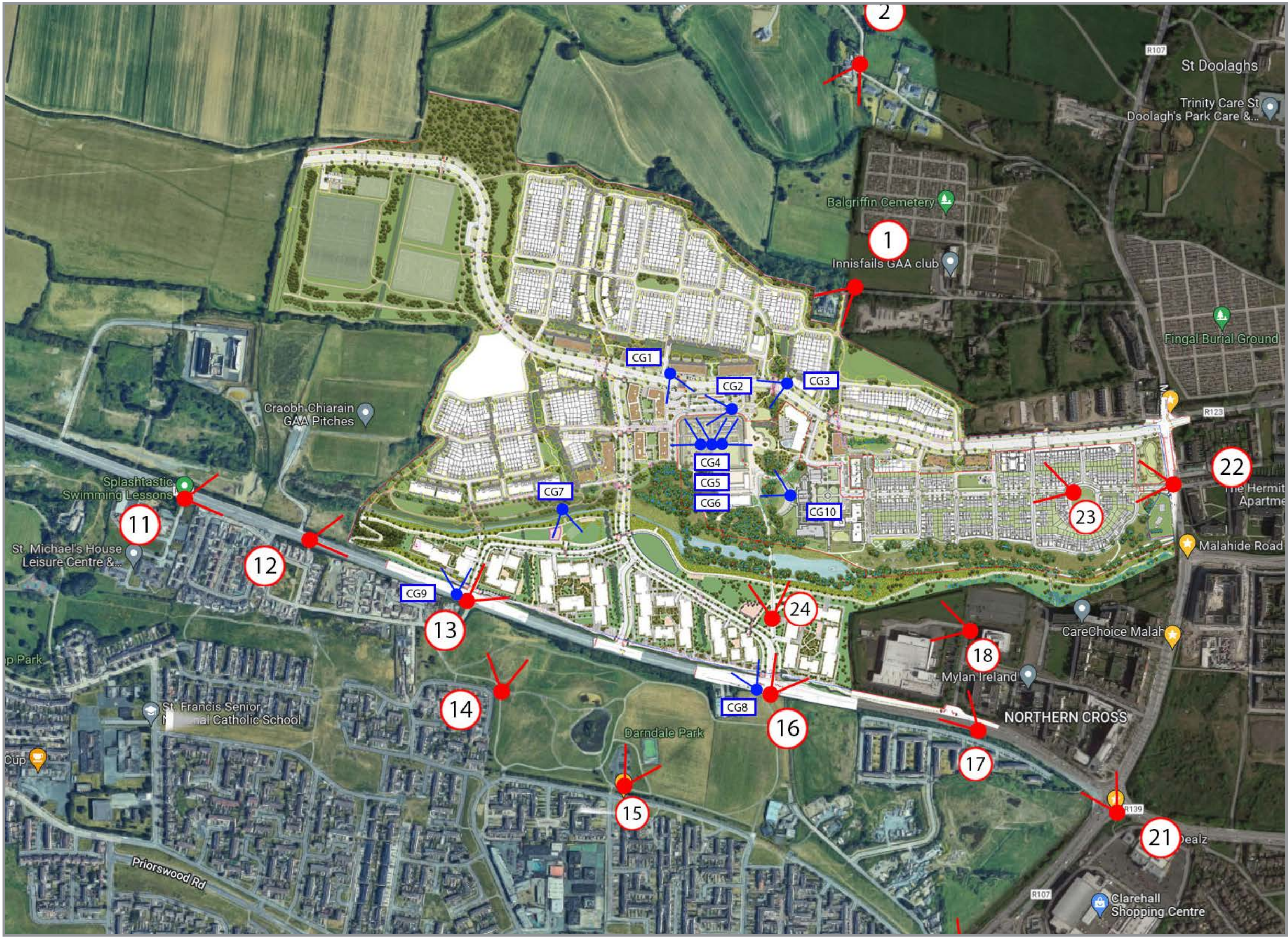
< 24mm / 73.7° | < 35mm / 54.4° | < 50mm / 39.6° | Lens Information: Focal Length / Field of View | 50mm / 39.6° > | 35mm / 54.4° > | 24mm / 73.7° >

Location	Description	Photography Date	Field of view	35mm equivalent	Distance to site boundary	Camera model
View 24 Existing	Looking North from within site looking towards Belcamp House	30/10/21	73.7°	24mm	N/A	Canon EOS 5DS



< 24mm / 73.7° | < 35mm / 54.4° | < 50mm / 39.6° | Lens Information: Focal Length / Field of View | 50mm / 39.6° > | 35mm / 54.4° > | 24mm / 73.7° >

Location	Description	Photography Date	Field of view	35mm equivalent	Distance to site boundary	Camera model
View 24 Proposed	Looking North from within site looking towards Belcamp House	30/10/21	73.7°	24mm	N/A	Canon EOS 5DS



CG View Location Map - not to scale

This map is for view location purposes only. Please refer to Architects drawings for site layout and redline boundary.



CG View 01



CG View 02



CG View 03



CG View 04



CG View 05



CG View 06



CG View 07



CG View 08



CG View 09



CG View 10